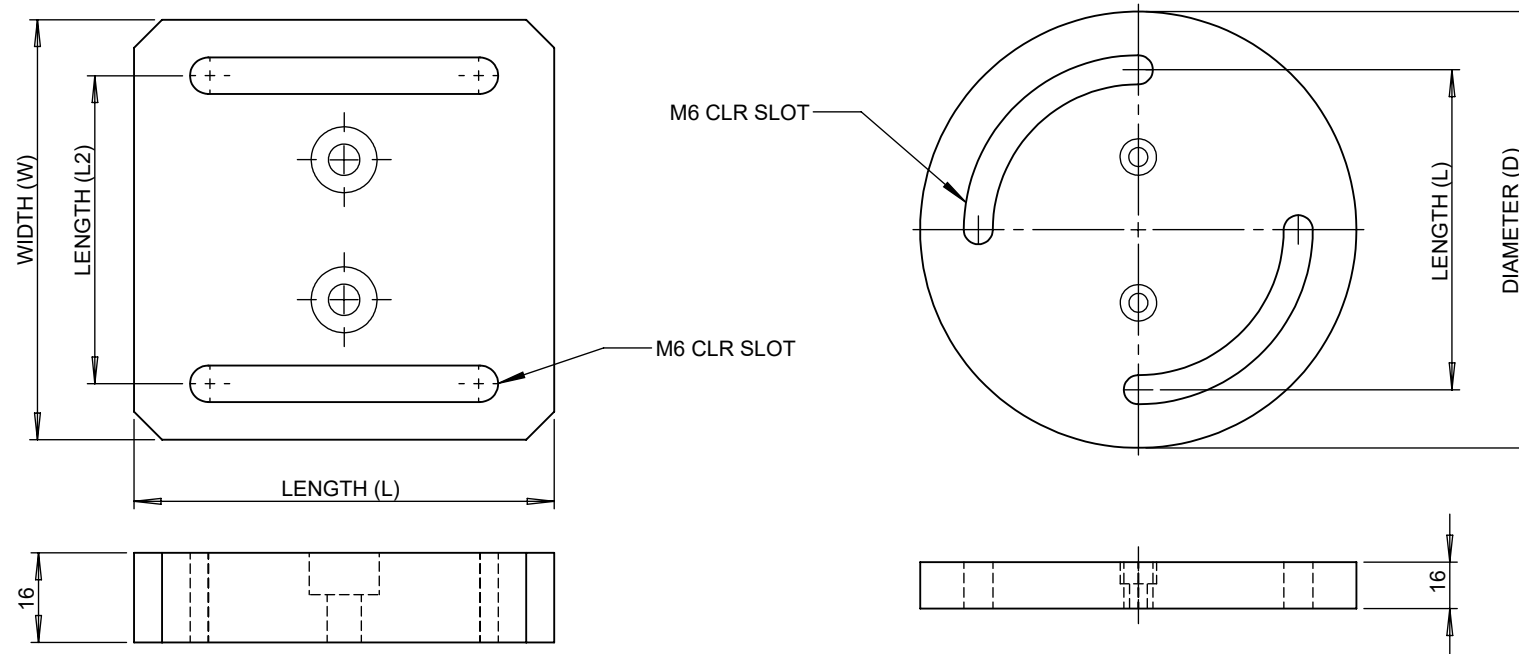


ONLY FOR INFORMATION, NOT FOR MANUFACTURING



| Available Sizes (LxWxT) | Length (L2) | Model Number |
|-----------------------------|-------------|--------------|
| 125X125X16 (Double Channel) | 100mm | OM-DPB-125 |

| Available Sizes | Length (L) | Model Number |
|-----------------------|------------|--------------|
| Ø125 (Double Channel) | 100 mm | OM-DPB-125R |

SPECIFICATIONS :

- Aluminum alloy construction.
- 16mm thick plate.
- M6 CLR Slot for mounting to Optical Breadboards.
- Black anodized finish.

All Dimensions are in mm

| | | | |
|----------|------------|-----------|----------|
| DRAWN | VIJAY | SCALE | NA |
| CHECKED | N | REVISION | R-0 |
| APPROVED | DRK | PAGE SIZE | A4 |
| DATE | 14-07-2021 | SHEET NO. | 01 OF 01 |

MODEL/DWG NO :

OAE-OM-DPB.SERIES



TITLE :

DAMPED HEAVY DUTY POST BASE

Optica

OPTICS & ALLIED ENGINEERING PVT.LTD
WWW.OPTICSINDIA.COM INFO@OPTICSINDIA.COM

PROPRIETARY AND CONFIDENTIAL : THE INFORMATION CONTAINED IN THIS DRAWING IS THE SOLE PROPERTY OF OPTICS & ALLIED ENGINEERING PVT.LTD. ANY PRODUCTION IN PART OR AS A WHOLE WITHOUT THE WRITTEN PERMISSION OF OPTICS & ALLIED ENGINEERING. IS STRICTLY PROHIBITED.