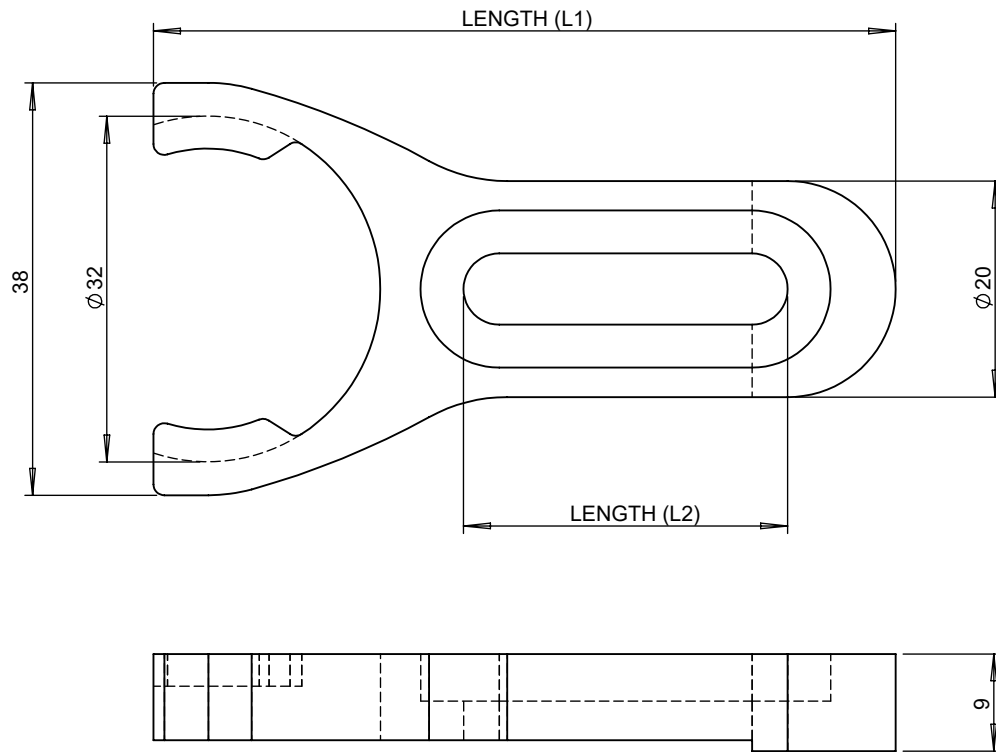


ONLY FOR INFORMATION, NOT FOR MANUFACTURING



Aluminium made		
Available Sizes		Model Number
Length (L1)	Length (L2)	
75mm	30mm	OM-CF-75
100mm	55mm	OM-CF-100

Stainless Steel made		
Available Sizes		Model Number
Length (L1)	Length (L2)	
75mm	30mm	OM-CF-75SS
100mm	55mm	OM-CF-100SS

All Dimensions are in mm

DRAWN	VIJAY	SCALE	NA
CHECKED	N	REVISION	R-0
APPROVED	DRK	PAGE SIZE	A4
DATE	13-07-2021	SHEET NO.	01 OF 01

MODEL/DWG NO :

OAE-OM-CF.SERIES



TITLE :

CLAMPING FORK

Optica

OPTICS & ALLIED ENGINEERING PVT.LTD
 WWW.OPTICSINDIA.COM INFO@OPTICSINDIA.COM

PROPRIETARY AND CONFIDENTIAL. THE INFORMATION CONTAINED IN THIS DRAWING IS THE SOLE PROPERTY OF OPTICS & ALLIED ENGINEERING PVT.LTD. ANY PRODUCTION IN PART OR AS A WHOLE WITHOUT THE WRITTEN PERMISSION OF OPTICS & ALLIED ENGINEERING. IS STRICTLY PROHIBITED.

SPECIFICATIONS :

- Aluminum alloy / stainless steel construction.
- M6 C'Bore Slot for mounting.
- 9mm thick plate.
- Black anodized finish (only for aluminium).
- Clamping forks are available on Stainless steel material on request.